

Chorley
Council

Planning
Committee Meeting

7th February 2023



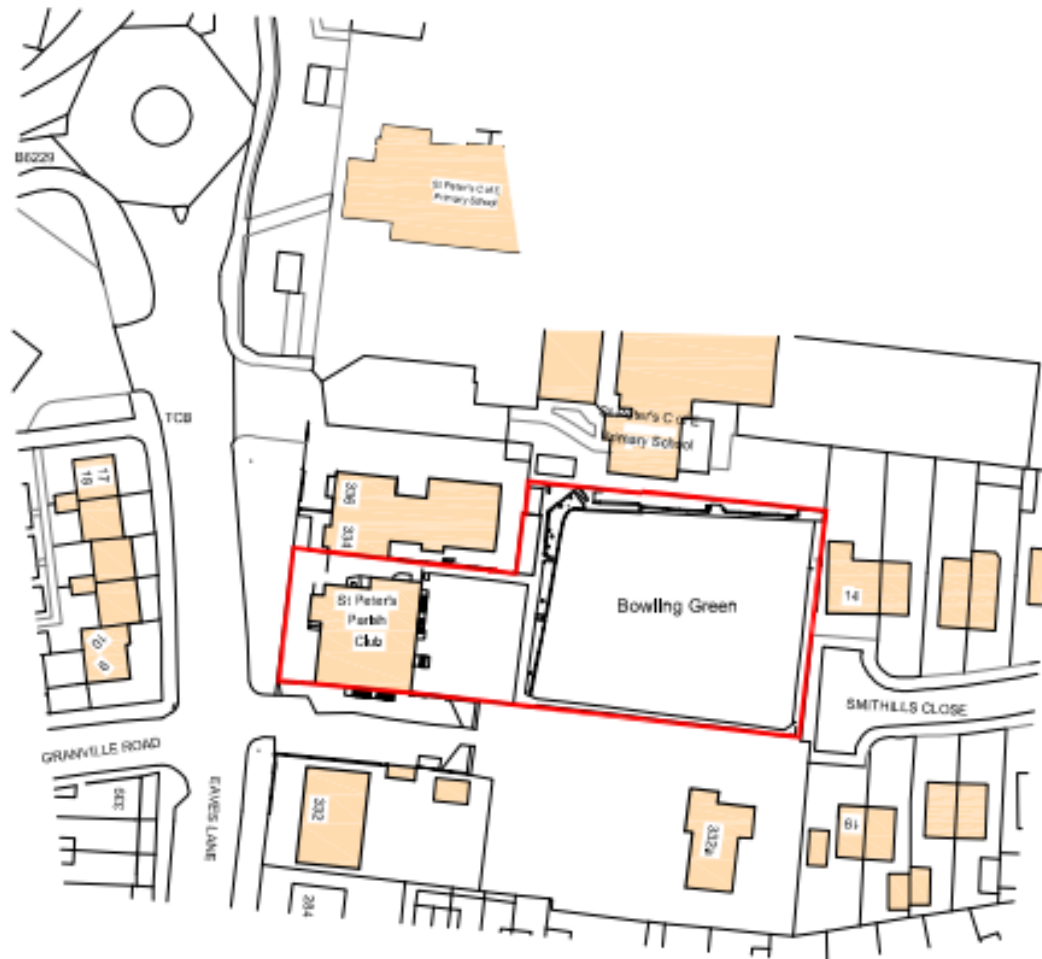
Item 3f

22/00719/FUL

St Peters Parish Club, Eaves Lane, Chorley

Erection of single storey building to accommodate a retail unit/convenience store (Use Class E(a)), associated car parking and creation of new access on to Eaves Lane (following demolition of the existing social club building)

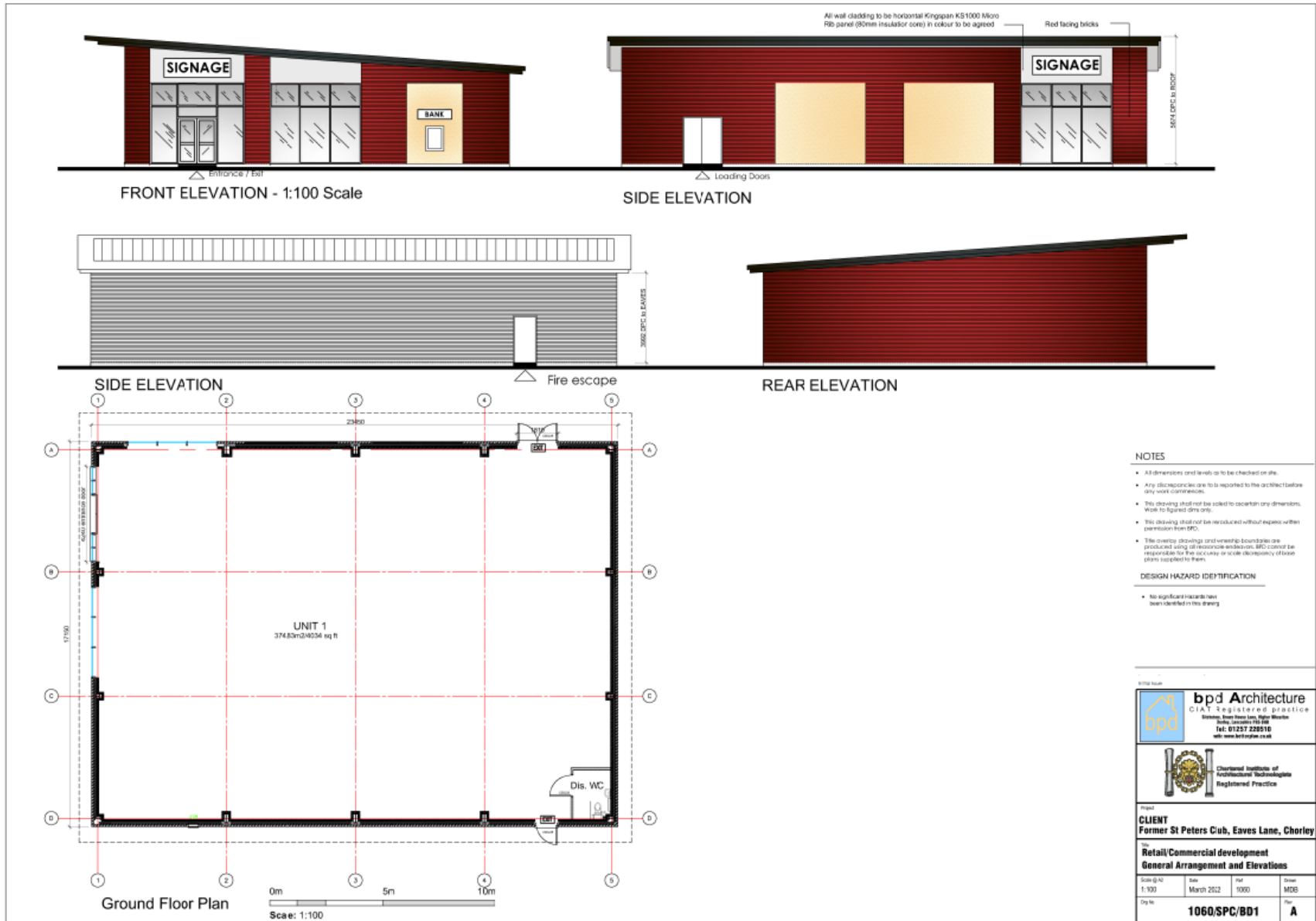
Location Plan



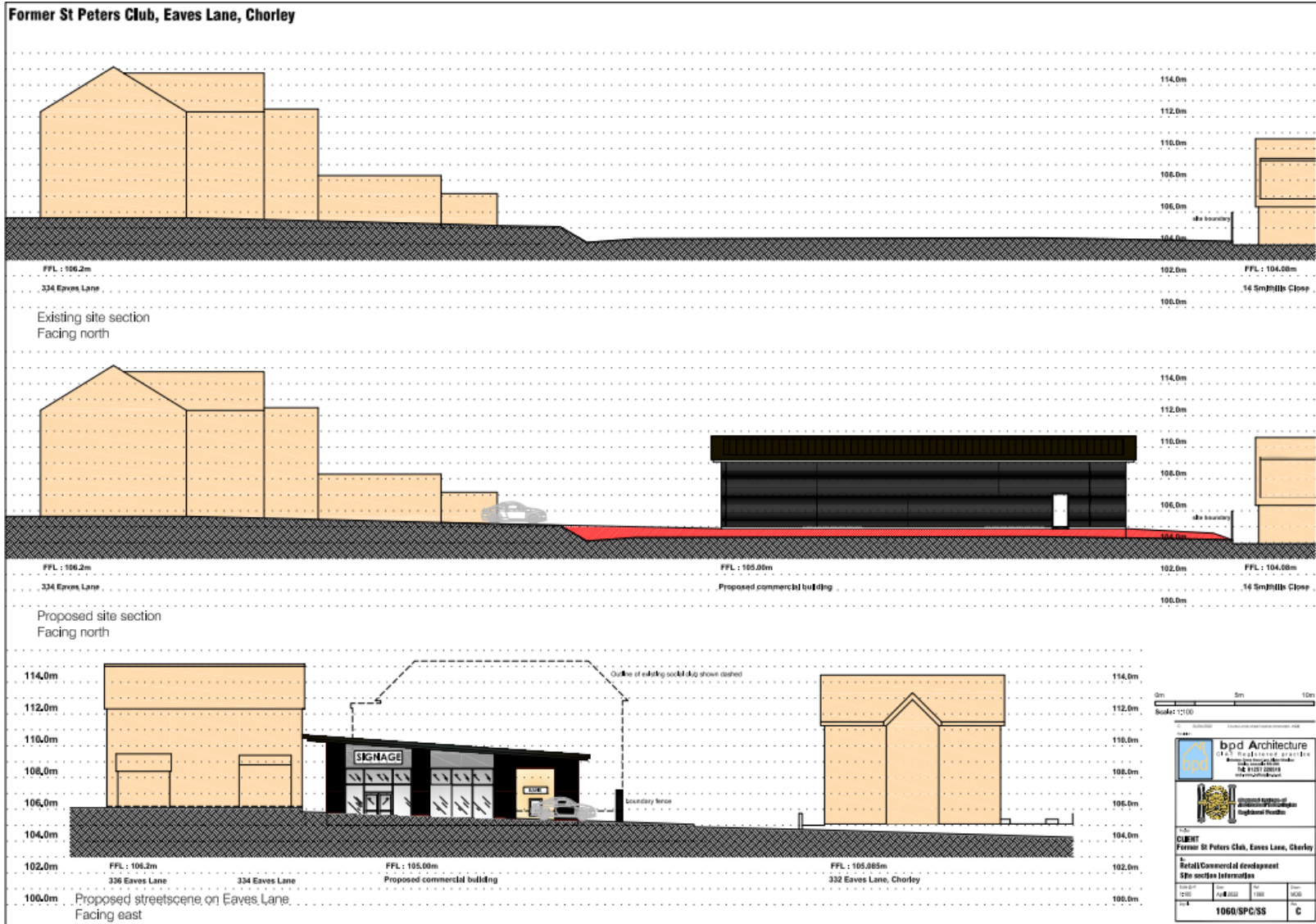
Aerial photograph



Proposed plans



Existing and proposed sections



View of site from SW at Eaves Lane



View of bowling green from side of 14 Smithills Close



View towards side (south) boundary of site



View of site from Smithills Close



View of side boundary and 332A Eaves Lane

